



## Opening Hours

Tuesday to Sunday | 10am-6pm

(closed on Mondays and some holidays)

📍 Escola Básica Conde Ferreira, Largo do Conselheiro Ferreira Freire / EN 335, 3060-133 Cantanhede, Portugal

☎ +351 231 429 813

🌐 /LOADZXspectrum

🌐 www.loadzx.com

🌐 /company/loadzxspectrum

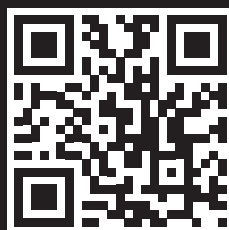
✉ info@loadzx.com

📘 /LOADZXspectrum

✉ visit@loadzx.com

📷 /loadzxspectrum

🐦 /ZxLoad



## Promoters



**PRESERVING HISTORY,  
CELEBRATING INNOVATION!**





The **LOAD ZX MUSEUM** is the world's first museum dedicated to the famous British computer, the **ZX Spectrum** which, during the 80s, made its way into many Portuguese, Spanish, and English homes and numerous others.

The museum is an internationally acclaimed project that strives to honor those who introduced the microcomputers into our homes and helped democratize our access to gaming. Inside, visitors can discover the countless inventions of a visionary Englishman - **Sir Clive Sinclair**, who advanced technology further in radio systems, watches, calculators, computers, and even electric vehicles.

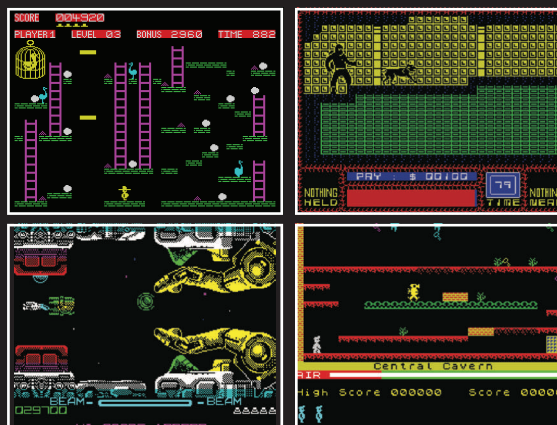
Explore the ZX Spectrum's pivotal role in democratizing our access to technology and its fundamental contribution to the technological revolution that introduced the cell phone into our daily lives.

Discover the important role played by the Portuguese **TIMEX** factory and other Portuguese companies (Landry, S.G.O., Triudus, J.G., ...) in this phenomenon that began in the **80s**.



TIMEX TERMINAL 3000 Version A1.0  
14, February 1986  
TEST RAM,ROM OK

Rediscover thousands of games and their creators, who catapulted the **Spectrum** to fame and unlocked doors to the technological world for countless individuals.



**A FASCINATING JOURNEY  
THROUGH THE HISTORY OF TECHNOLOGY  
THAT CONTINUES TO INSPIRE GENERATIONS**

